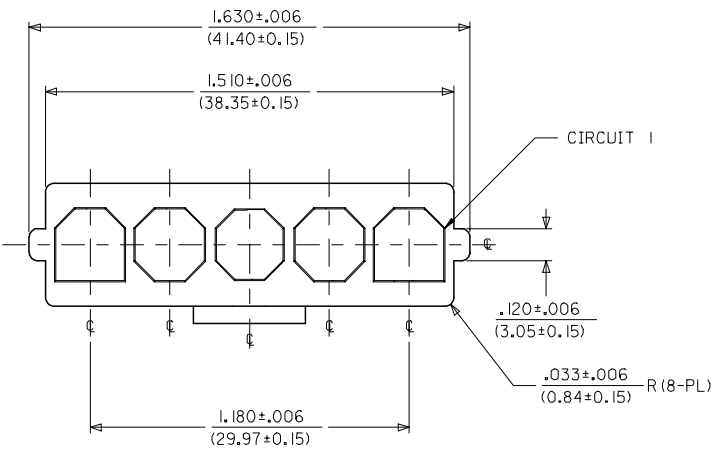
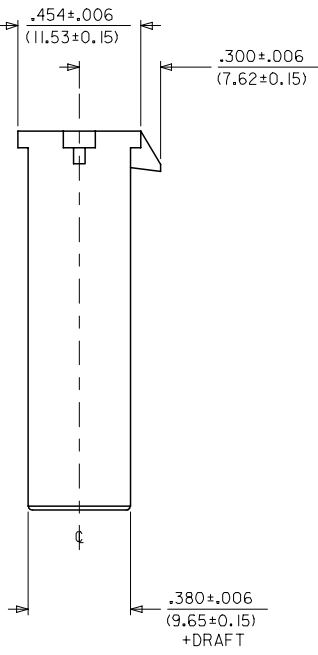
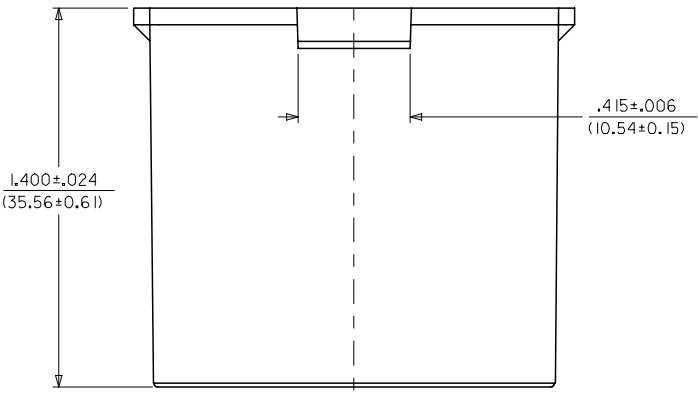


13 12 11 10 9 8 7 6 5 4 3 2 1

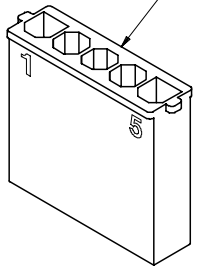
ITEM NUMBER	MATERIAL	COLOR
43680-2005	UL94V-0 NYLON	BLACK
43680-1005	UL94V-2 NYLON	NATURAL (TRANSLUCENT)



- NOTE:
1. MATERIAL: SEE CHART.
  2. FINISH: NONE.
  3. PRODUCT SPECIFICATION: PSX-44441-9999.
  4. PACKAGING: PK-43680-001.
  5. THIS CONNECTOR HOUSING FOR USE WITH 43178-\*\*\*\* TERMINALS.
  6. THIS CONNECTOR HOUSING WILL MATE TO 43335-\*\*\*5, 43179-\*\*\*5 AND 44441-\*\*\*5 HOUSINGS.
  7. PARTS CONFORM TO CLASS B REQUIREMENTS OF COSMETIC SPEC PS-45499-002.



LOCKING NUB IS LOCATED HERE



43680-\*005  
(NO SCALE)

ADD NOTES 2 & 7 EC NO: UCP2008-0911 2007/11/15 DRAWN/PRD/DR 2007/11/16 CHKD:LS/HMT 2007/11/16 APPR:FSM/TH 2007/11/16 REV DESCRIPTION	QUALITY SYMBOLS	GENERAL TOLERANCES (UNLESS SPECIFIED)	DIMENSION STYLE	SCALE	DESIGN UNITS	THIRD ANGLE PROJECTION																												
	$\nabla=0$ $\nabla=0$	<table border="1"> <thead> <tr> <th></th> <th>mm</th> <th>INCH</th> </tr> </thead> <tbody> <tr> <td>4 PLACES</td> <td>± ---</td> <td>± ---</td> </tr> <tr> <td>3 PLACES</td> <td>± ---</td> <td>± .010</td> </tr> <tr> <td>2 PLACES</td> <td>± 0.25</td> <td>± .014</td> </tr> <tr> <td>1 PLACE</td> <td>± 0.35</td> <td>± ---</td> </tr> </tbody> </table>		mm	INCH	4 PLACES	± ---	± ---	3 PLACES	± ---	± .010	2 PLACES	± 0.25	± .014	1 PLACE	± 0.35	± ---	<table border="1"> <thead> <tr> <th>IN/MM</th> <th>DATE</th> <th>TITLE</th> </tr> </thead> <tbody> <tr> <td>DRAWN BY</td> <td>03/22/96</td> <td rowspan="2">5-CIR. PLUG HOUSING .125/(3.18)X.020/(0.51) SABRE - TPA</td> </tr> <tr> <td>CHECKED BY</td> <td>03/22/96</td> </tr> <tr> <td>APPROVED BY</td> <td>03/22/96</td> <td rowspan="2">  MOLEX INCORPORATED           </td> </tr> <tr> <td>MATERIAL NO.</td> <td>03/22/96</td> </tr> </tbody> </table>	IN/MM	DATE	TITLE	DRAWN BY	03/22/96	5-CIR. PLUG HOUSING .125/(3.18)X.020/(0.51) SABRE - TPA	CHECKED BY	03/22/96	APPROVED BY	03/22/96	MOLEX INCORPORATED	MATERIAL NO.	03/22/96	4:1	INCH	
		mm	INCH																															
	4 PLACES	± ---	± ---																															
3 PLACES	± ---	± .010																																
2 PLACES	± 0.25	± .014																																
1 PLACE	± 0.35	± ---																																
IN/MM	DATE	TITLE																																
DRAWN BY	03/22/96	5-CIR. PLUG HOUSING .125/(3.18)X.020/(0.51) SABRE - TPA																																
CHECKED BY	03/22/96																																	
APPROVED BY	03/22/96	MOLEX INCORPORATED																																
MATERIAL NO.	03/22/96																																	
DRAFT WHERE APPLICABLE MUST REMAIN WITHIN DIMENSIONS	SEE CHART	MATERIAL NO. SD-43680-*005	SHEET NO. 1 OF 1																															

12 11 10 9 8 7 6 5 4 3 2 1